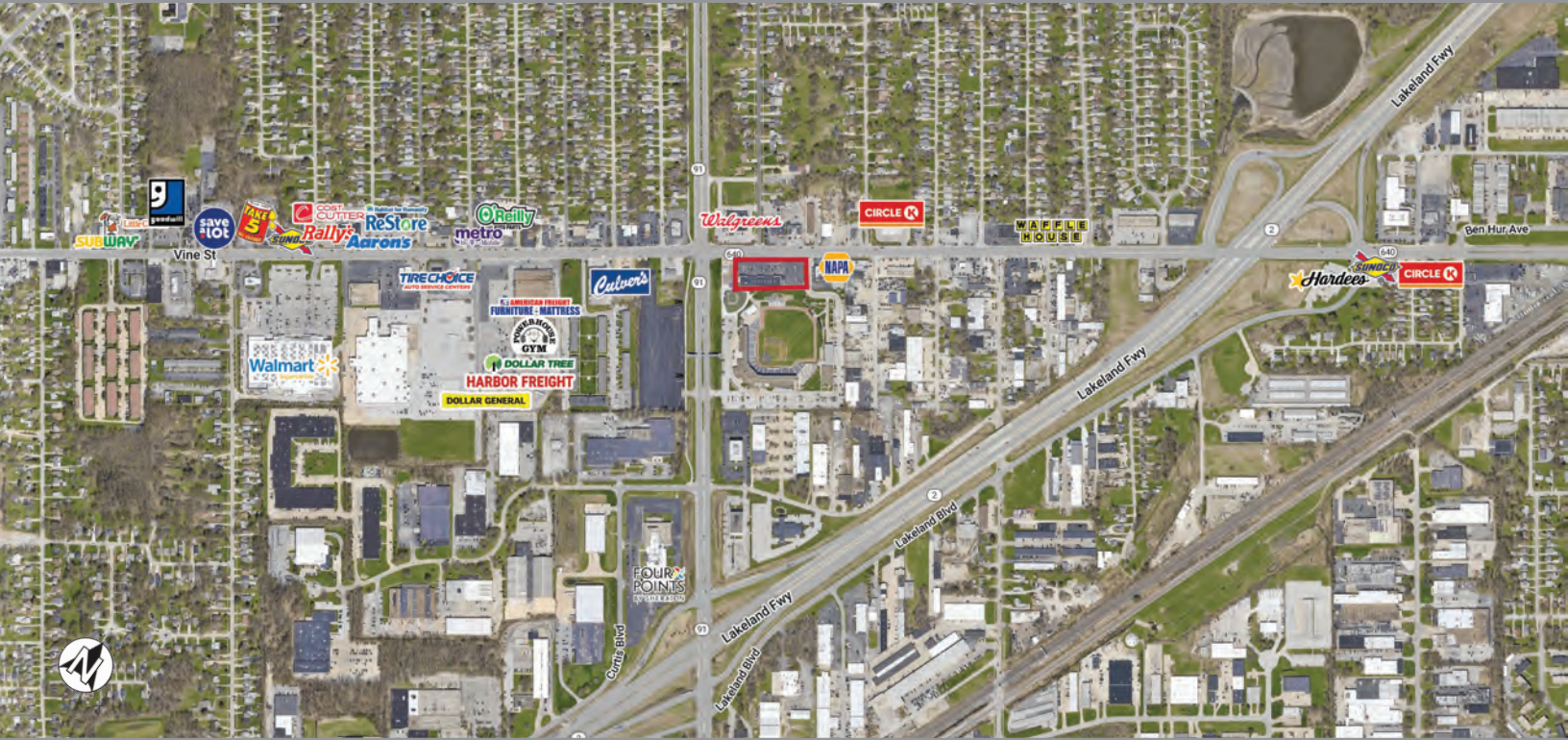


Centennial Plaza

35400 Vine St.
Eastlake, OH 44095
Lake County



key features

- located in close proximity to Lakeland Freeway and I-90 in densely populated submarket of Greater Cleveland
- adjacent to Lake County Captains Ballpark, home of Minor League Baseball affiliate of the Cleveland Guardians
- potential pad site available for ground lease/development
- daily traffic counts: 16,455 on Vine Street/State Hwy. 640 and 20,360 on SOM Center Road/State Hwy. 91

demographics

	1 mile	3 miles	5 miles
population	7,763	59,920	116,412
households	3,611	28,141	54,138
avg. household income	\$80,427	\$90,949	\$90,128
daytime population	12,906	47,372	91,232

2023 estimates. Source: Applied Geographic Solutions 4/2023, TIGER Geography

retail space for lease 1,470 – 4,673 sf



Centennial Plaza

35400 Vine St.
Eastlake, OH 44095
Lake County

UNIT	TENANT	DIMS.	S.F.
A	CHASE BANK	47 x 60	2,812
C	CHEESESTEAK WHIZARD	20 x 60	1,225
D	MASTER PIZZA	20 x 60	1,200
E-G	AVAILABLE - CAN BE COMBINED	53.4 x 60	3,203
H	AVAILABLE - CAN BE COMBINED	24.5 x 60	1,470
I	BOOST MOBILE	15 x 60	904
J	TWO BUCKS BAR & GRILL	69 x 60	4,154

