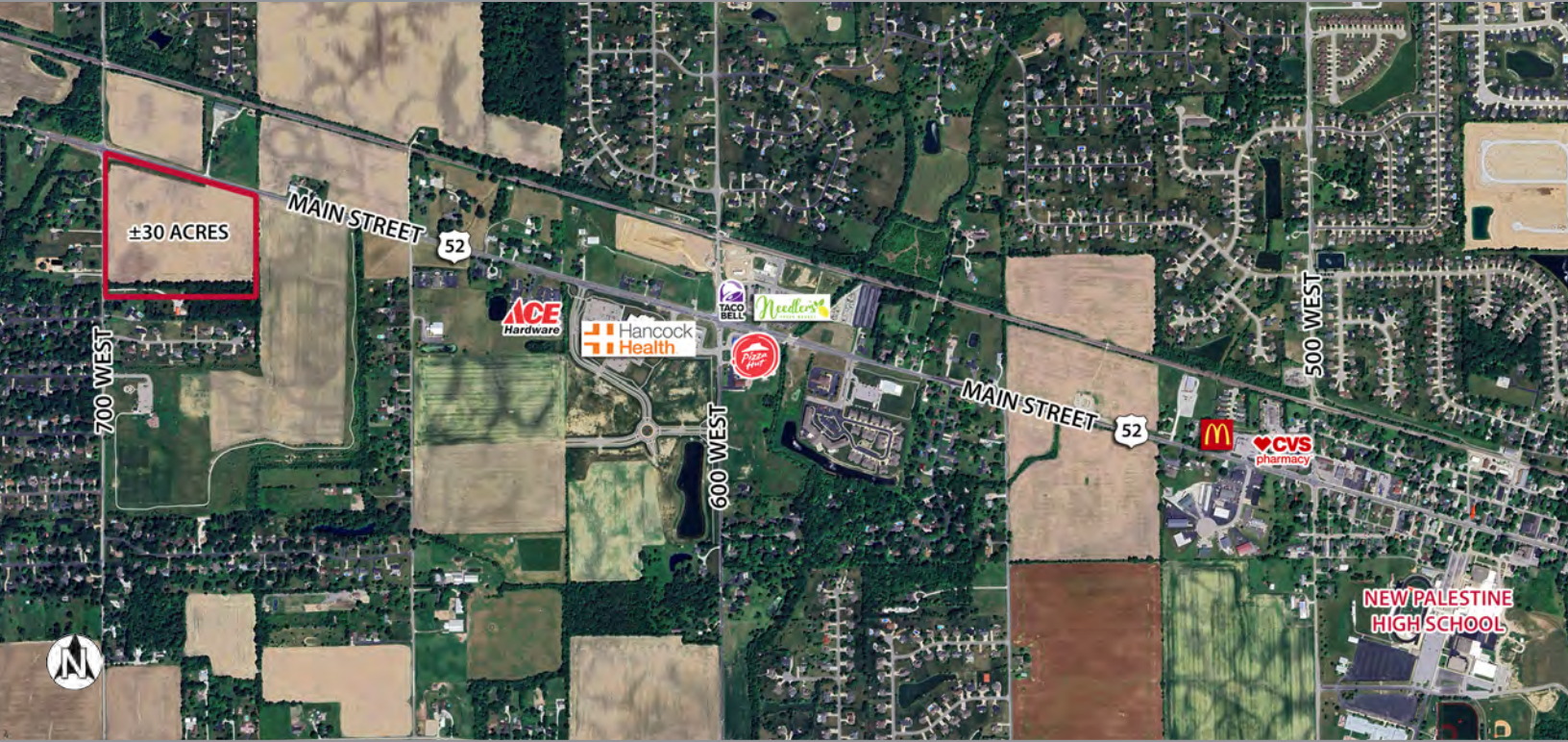


# Doe Creek Development

Main St. & 700 W.  
New Palestine, IN 46163  
Hancock County



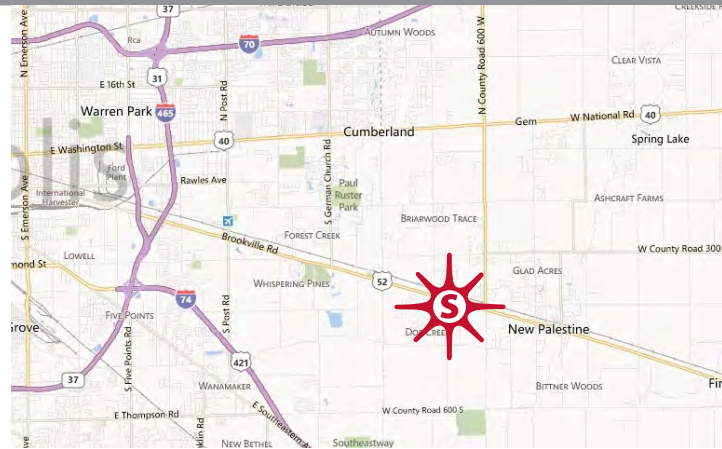
## key features

- growing affluent community
- only 13 miles from downtown Indianapolis
- zoned CN
- daily traffic count: 12,789 on Main Street/U.S. 52

## demographics

	1 mile	3 miles	5 miles
population	2,418	14,158	48,668
households	905	5,351	18,379
avg. household income	\$186,492	\$147,291	\$123,948
daytime population	878	6,393	24,292

2024 Estimates. Source: Applied Geographic Solutions 5/2024, TIGER Geography



land for sale/lease/build-to-suit ±30 acres

Thomas Siffermann 317.524.7819 [tsiffermann@sandordev.com](mailto:tsiffermann@sandordev.com)

10689 N. Pennsylvania St., Suite 100, Indianapolis, IN 46280

www.sandordev.com  
**sandor**