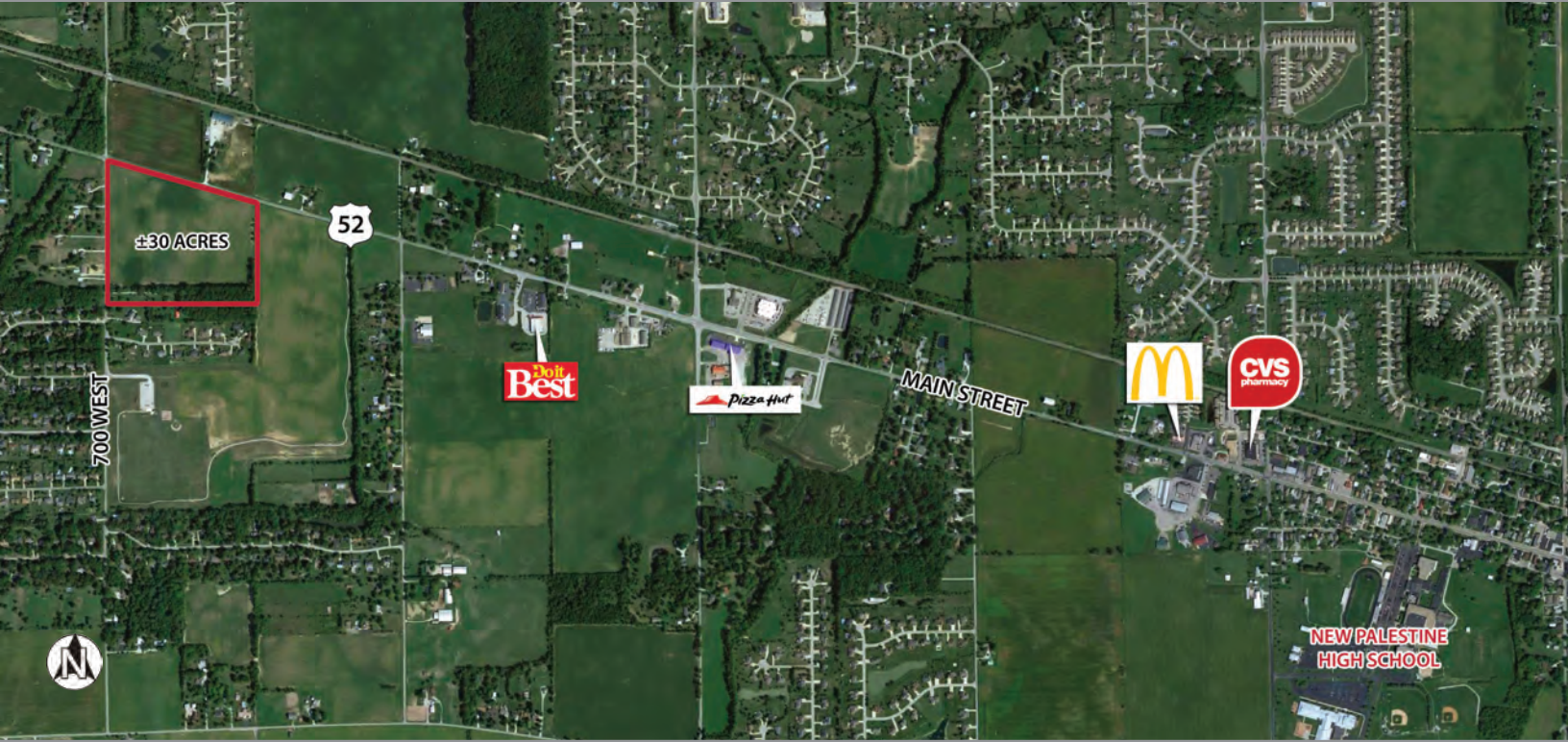


Doe Creek Development

Main St. & 700 W.
New Palestine, IN 46163
Hancock County



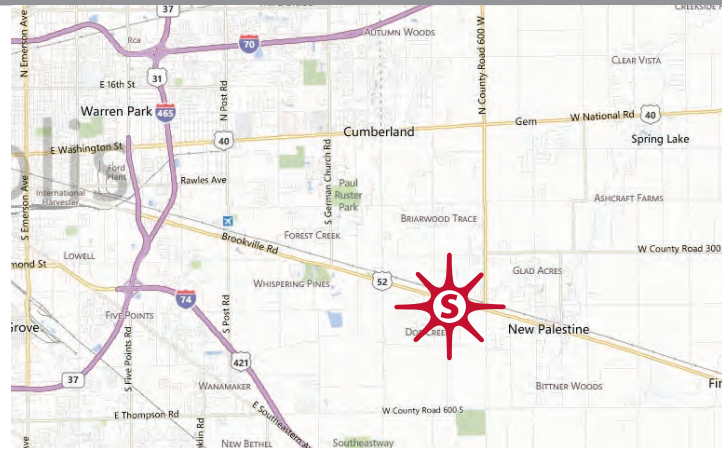
key features

- growing community
- only 13 miles from downtown Indianapolis
- zoned CN
- daily traffic count: 12,573 on Main Street/U.S. 52

demographics

	1 mile	3 miles	5 miles
population	2,315	13,968	48,890
households	835	5,288	18,426
avg. household income	\$191,448	\$139,681	\$118,575
daytime population	733	5,473	22,080

2023 Estimates. Source: Applied Geographic Solutions 4/2023, TIGER Geography



land for sale/lease/build-to-suit ±30 acres

Thomas Siffermann 317.524.7819 tsiffermann@sandordev.com

10689 N. Pennsylvania St., Suite 100, Indianapolis, IN 46280

www.sandordev.com
sandor