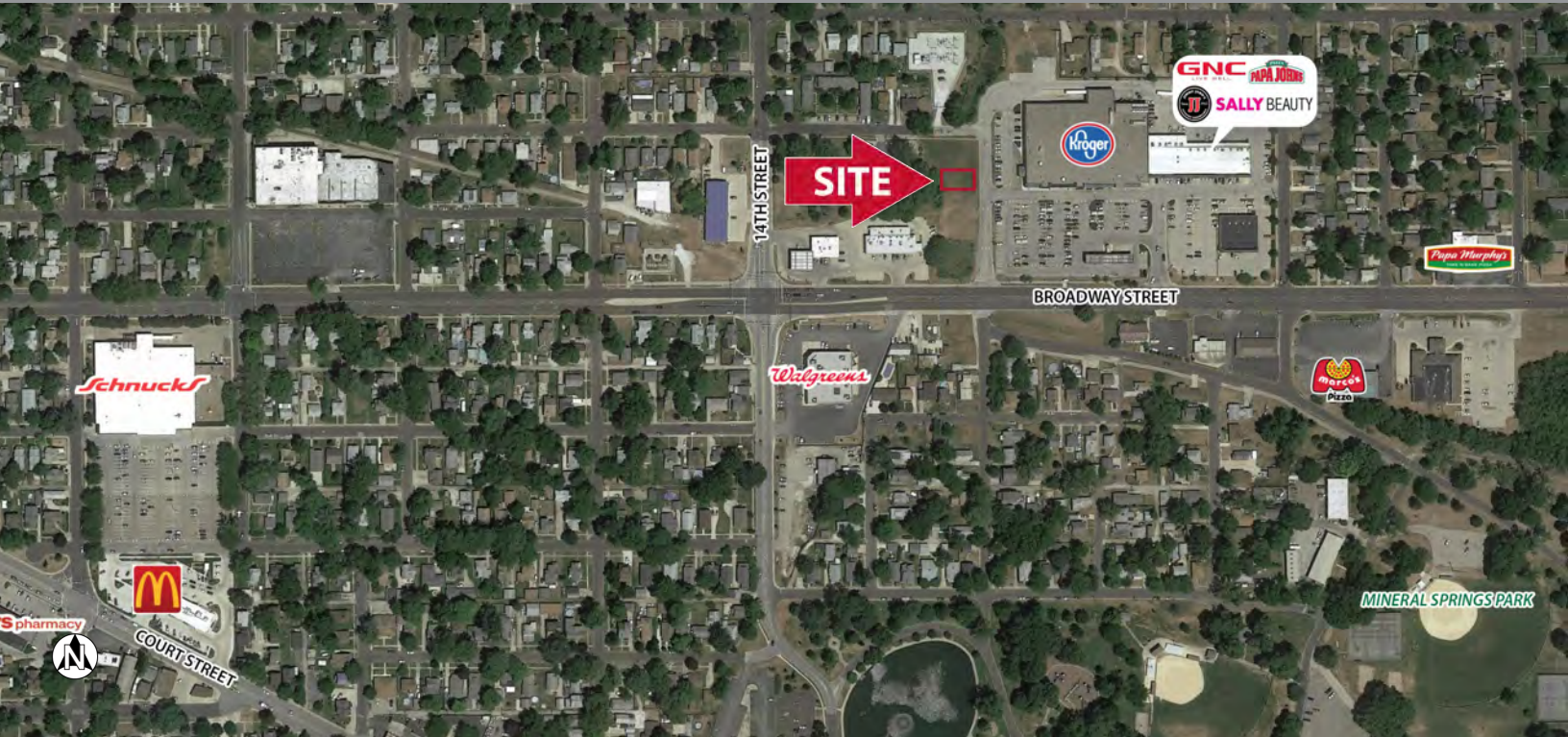


# Kroger Outlot

1607 Broadway St.  
Pekin, IL 61554  
Tazewell County



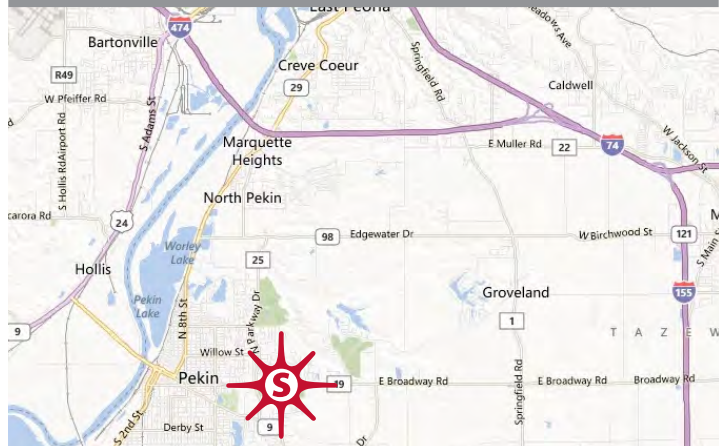
## key features

- anchored by Kroger
- zoned Commercial
- daily traffic count: 10,350 on Broadway Street

## demographics

	1 mile	3 miles	5 miles
population	13,559	34,230	42,722
households	6,004	14,703	18,112
avg. household income	\$73,576	\$83,189	\$88,239
daytime population	8,221	30,271	34,880

2025 Estimates. Source: Applied Geographic Solutions 5/2025, TIGER Geography



**outlot for sale or lease**      ±0.06 acre

Thomas Siffermann    317.524.7819    [tsiffermann@sandordev.com](mailto:tsiffermann@sandordev.com)

10689 N. Pennsylvania St., Suite 100, Indianapolis, IN 46280

www.sandordev.com  
**sandor**

# Kroger Outlot

1607 Broadway St.  
Pekin, IL 61554  
Tazewell County

## outlot

UNIT	AC
OUTLOT	0.06

## owned by others

UNIT	TENANT	DIMS.	S.F.	UNIT	TENANT	DIMS.	S.F.
1613	U.S. ARMY/NAVY RECRUITING	35.2 x 100	3,520	1627	ADVANCE AMERICA	15 x 80	1,200
1617	GNC	15 x 100	1,500	1629	H&R BLOCK	25 x 80	2,000
1619A	VACANT	17.5 x 100	1,750	1631	JIMMY JOHN'S	20 x 80	1,600
1619	CHINA KING	14.4 x 100	1,444	1633	WISE FINANCIAL	15 x 80	1,200
1621	NAIL EXPERT	19.4 x 100	1,940	1635	STATE FARM INSURANCE	15 x 80	1,210
1623	SALLY BEAUTY	17 x 80	1,360	1637	AVALON FOOT & BODY	14 x 80	1,115
1625	VACANT	20 x 80	1,600	1639	PAPA JOHN'S	18 x 80	1,440

