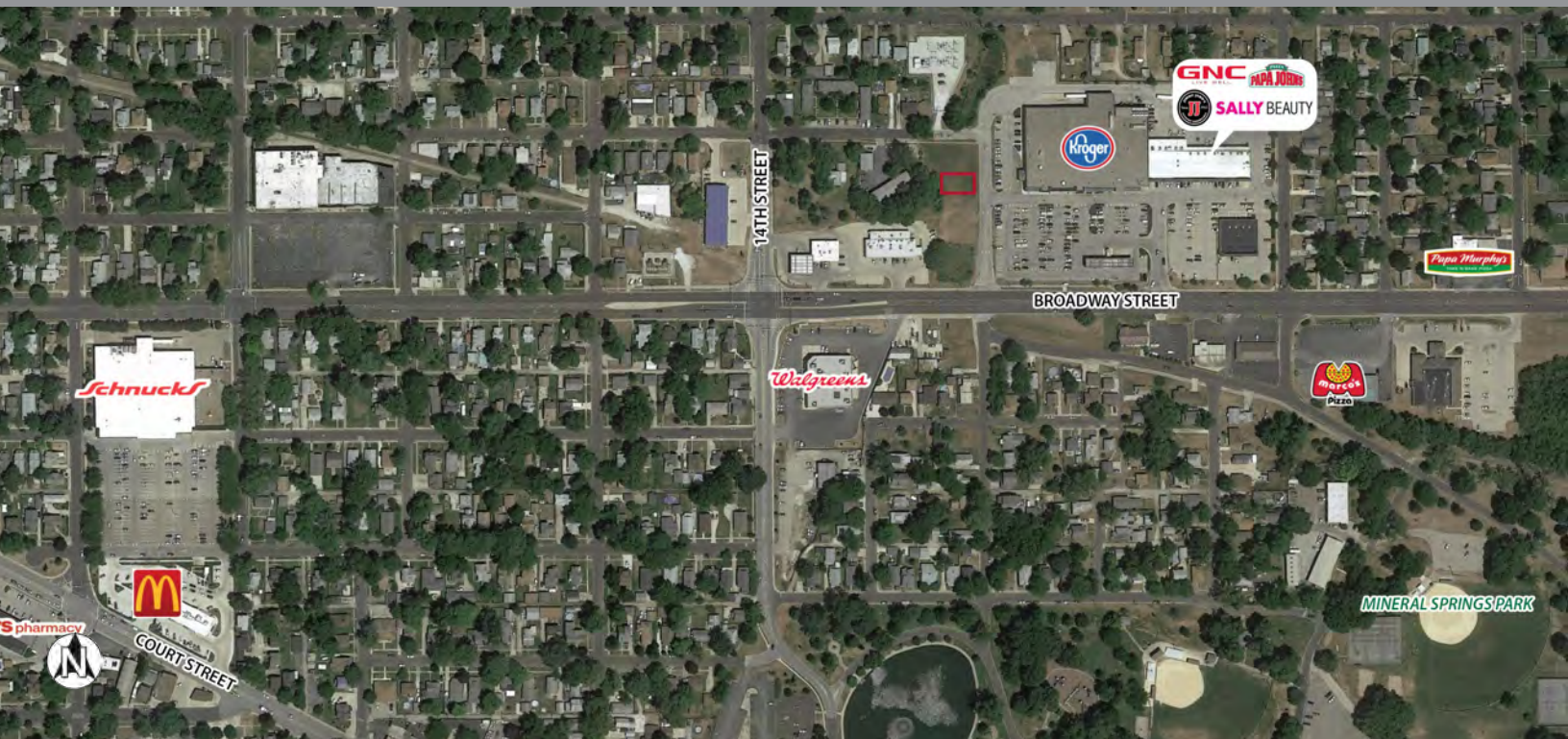


# Kroger Outlot

1607 Broadway St.  
Pekin, IL 61554  
Tazewell County



## key features

- anchored by Kroger
- zoned Commercial
- daily traffic count: 10,350 on Broadway Street

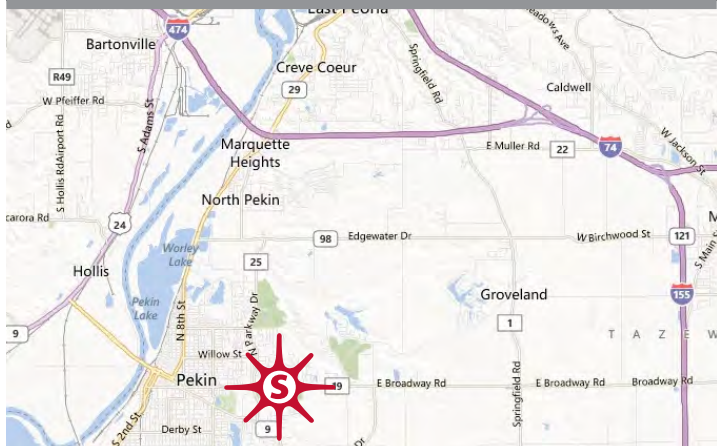
## demographics

	1 mile	3 miles	5 miles
population	13,559	34,230	42,722
households	6,004	14,703	18,112
avg. household income	\$73,576	\$83,189	\$88,239
daytime population	8,221	30,271	34,880

2025 Estimates. Source: Applied Geographic Solutions 5/2025, TIGER Geography

outlot for sale or lease

±0.06 acre



Thomas Siffermann 317.524.7819 [tsiffermann@sandordev.com](mailto:tsiffermann@sandordev.com)

10689 N. Pennsylvania St., Suite 100, Indianapolis, IN 46280

[www.sandordev.com](http://www.sandordev.com)

**sandor**

## outlot

UNIT

AC

OUTLOT

0.06

## owned by others

UNIT	TENANT	DIMS.	S.F.	UNIT	TENANT	DIMS.	S.F.
1613	U.S. ARMY/NAVY RECRUITING	35.2 x 100	3,520	1627	ADVANCE AMERICA	15 x 80	1,200
1617	GNC	15 x 100	1,500	1629	H&R BLOCK	25 x 80	2,000
1619A	VACANT	17.5 x 100	1,750	1631	JIMMY JOHN'S	20 x 80	1,600
1619	CHINA KING	14.4 x 100	1,444	1633	WISE FINANCIAL	15 x 80	1,200
1621	NAIL EXPERT	19.4 x 100	1,940	1635	STATE FARM INSURANCE	15 x 80	1,210
1623	SALLY BEAUTY	17 x 80	1,360	1637	AVALON FOOT & BODY	14 x 80	1,115
1625	VACANT	20 x 80	1,600	1639	PAPA JOHN'S	18 x 80	1,440

This is an Adobe® Illustrator® File that was saved without PDF Content.

To Place or open this file in other applications, it should be re-saved from Adobe Illustrator with the "Create PDF Compatible File" option turned on. This option is in the Illustrator Native Format Options dialog box, which appears when saving an Adobe Illustrator file using the Save As command.

This is an Adobe® Illustrator® File that was saved without PDF Content.

To Place or open this file in other applications, it should be re-saved from Adobe Illustrator with the "Create PDF Compatible File" option turned on. This option is in the Illustrator Native Format Options dialog box, which appears when saving an Adobe Illustrator file using the

This is an Adobe® Illustrator® File that was saved without PDF Content.

To Place or open this file in other applications, it should be re-saved from Adobe Illustrator with the "Create PDF Compatible File" option turned on. This option is in the Illustrator Native Format Options dialog box, which appears when saving an Adobe Illustrator file using the Save As command.

This is an Adobe® Illustrator® File that was saved without PDF Content.

To Place or open this file in other applications, it should be re-saved from Adobe Illustrator with the "Create PDF Compatible File" option turned on. This option is in the Illustrator Native Format Options dialog box, which appears when saving an Adobe Illustrator file using the