

Veterans Parkway Plaza

1370 Veterans Pkwy.
Clarksville, IN 47129
Clark County



key features

- 39,882-sf retail center located at the intersection of Veterans Parkway and I-65, Clarksville's primary retail corridor
- across the street from Walmart Supercenter and Sam's Club and shadow-anchored by Lowe's
- anchored by JenCare Senior Medical Center
- end cap available
- daily traffic counts: 102,974 on I-65 and 15,434 on Veterans Parkway

demographics

	1 mile	3 miles	5 miles
population	4,929	55,841	134,544
households	2,194	23,724	56,744
avg. household income	\$57,404	\$80,985	\$78,581
daytime population	7,873	36,129	121,220

2023 Estimates. Source: Applied Geographic Solutions 4/2023, TIGER Geography

retail space for lease 1,275 – 2,040 sf



Andrew T. Hasbrook 317.524.7868 ahasbrook@sandordev.com

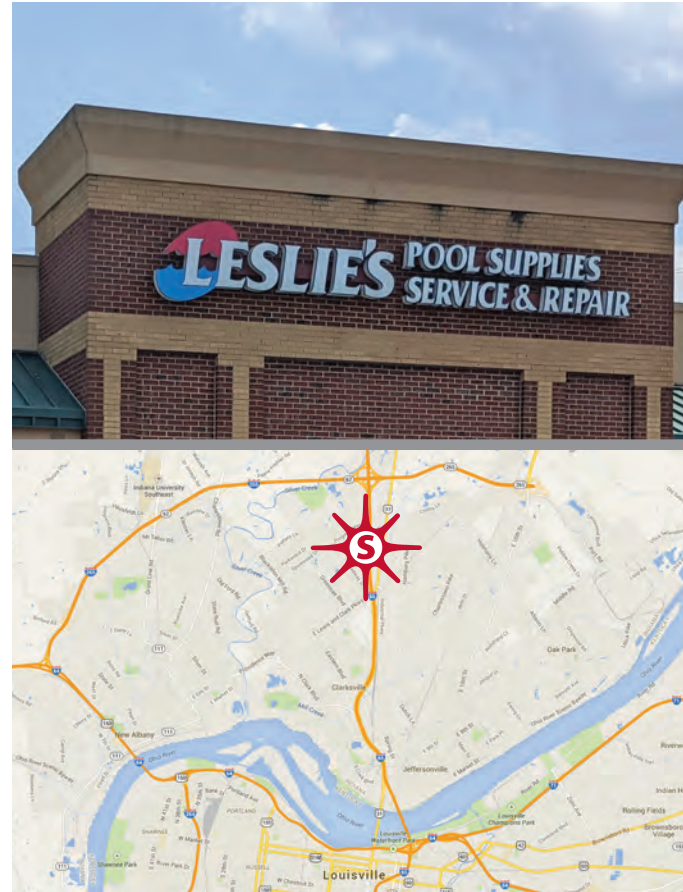
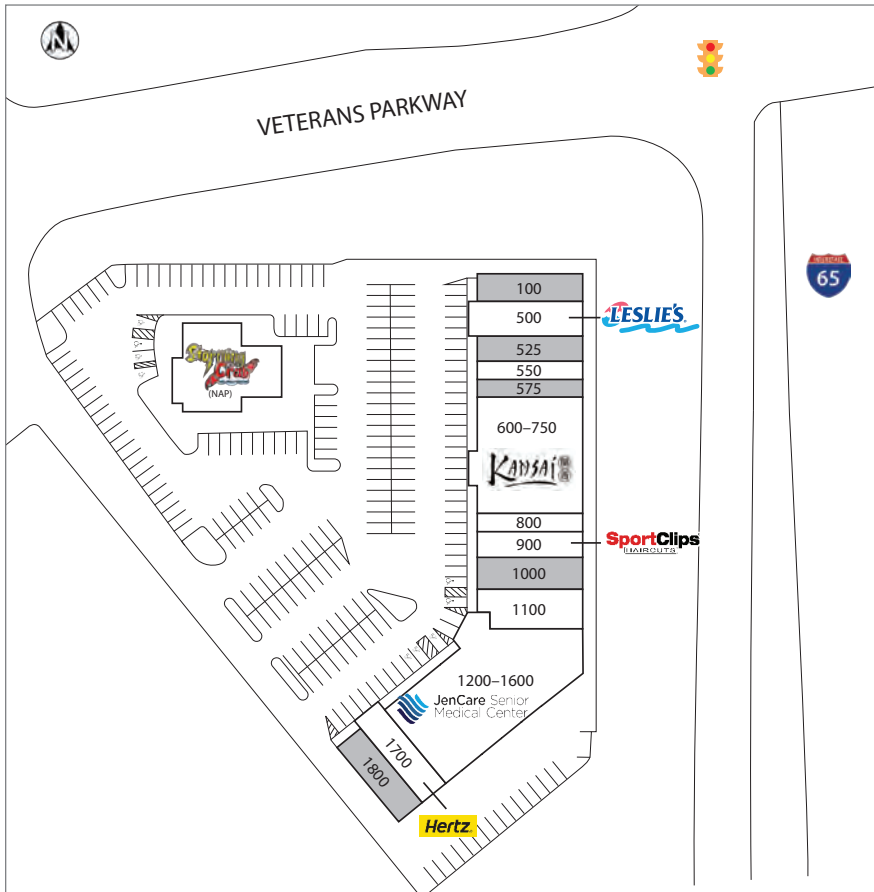
10689 N. Pennsylvania St., Suite 100, Indianapolis, IN 46280

www.sandordev.com
sandor

Veterans Parkway Plaza

1370 Veterans Pkwy.
Clarksville, IN 47129
Clark County

UNIT	TENANT	DIMS.	S.F.
100	AVAILABLE - END CAP	28 x 85	2,380
500	LESLIE'S POOL SUPPLIES	37.4 x 85	3,180
525	AVAILABLE	16.2 x 85	1,374
550	SURGE STAFFING	15 x 85	1,275
575	AVAILABLE	15 x 85	1,275
600-750	KANSAI JAPANESE STEAKHOUSE	92.5 x 85	7,870
800	MATHNASIUM	15 x 85	1,275
900	SPORT CLIPS	16 x 85	1,360
1000	AVAILABLE	24 x 85	2,040
1100	RESULTS PHYSIOTHERAPY	36 x 84 IRR	3,071
1200-1600	JENCARE SENIOR MEDICAL CENTER	132 x 75 IRR	11,032
1700	HERTZ	25 x 75	1,875
1800	AVAILABLE - END CAP	25 x 75	1,875



Andrew T. Hasbrook 317.524.7868 ahasbrook@sandordev.com

10689 N. Pennsylvania St., Suite 100, Indianapolis, IN 46280

www.sandordev.com
sandor