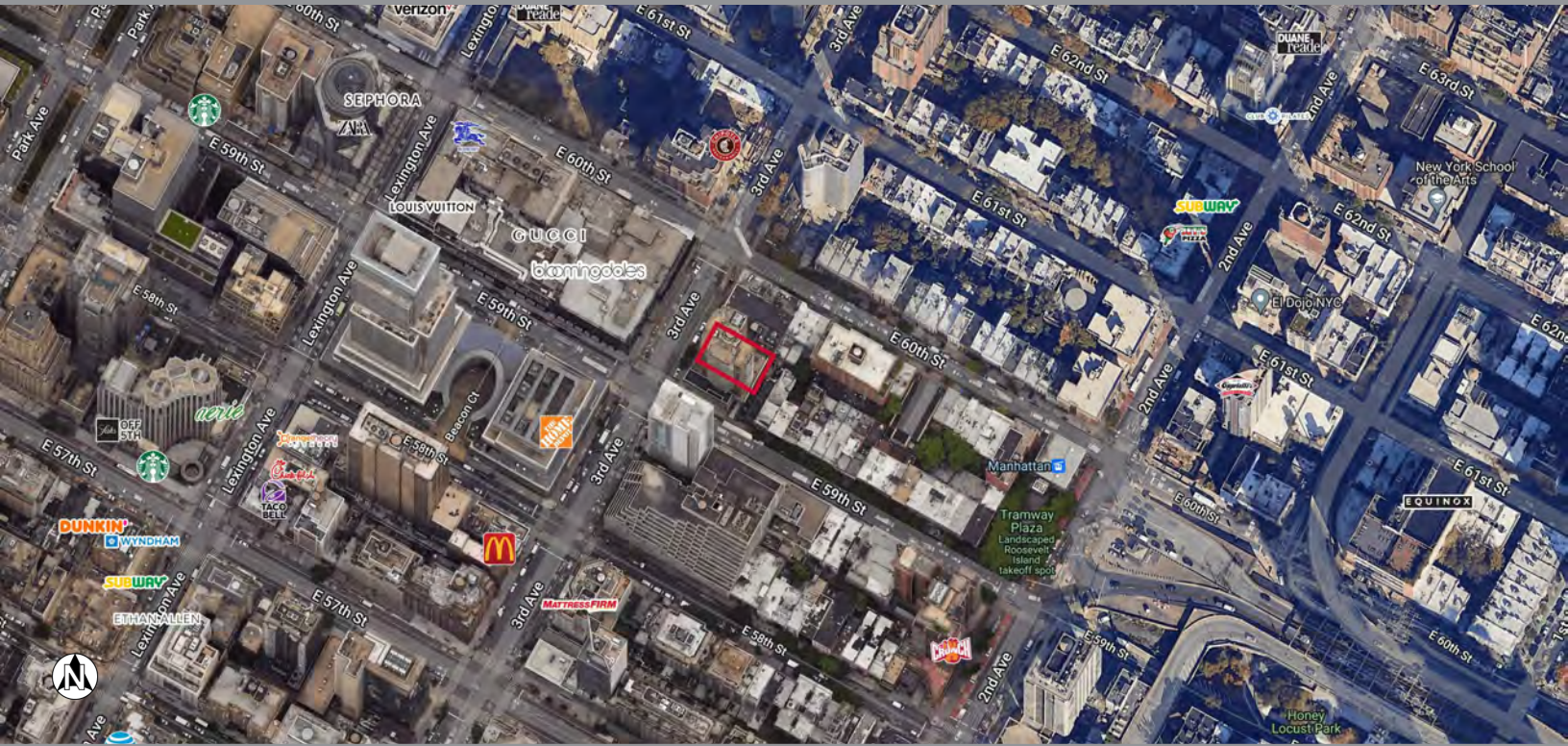


999 Third Avenue

999 Third Ave.
New York, NY 10022
Manhattan Borough, New York County



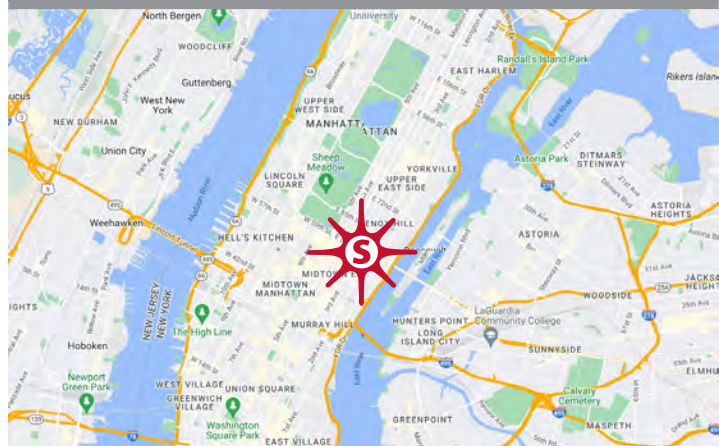
key features

- prime retail opportunity directly across from Bloomingdale's flagship location
- dense residential and daytime population
- near public transit
- 80 feet of frontage on Third Ave. (ground and second floors)
- ceiling heights of 20 feet (ground and second floors) and 13 feet (lower level)

demographics

	1 mile	3 miles	5 miles
population	165,498	1.33 M	2.91 M
households	95,065	690,568	1.33 M
avg. household income	\$282,045	\$215,141	\$179,956
daytime population	771,128	2.02 M	3.33 M

2024 estimates. Source: Applied Geographic Solutions 5/2024, TIGER Geography



retail space for lease 3,710–17,530 sf

Jay D. Stein 480.570.1411 jdstein@sandordev.com

5725 N. Scottsdale Rd., Suite C-195, Scottsdale, AZ 85250

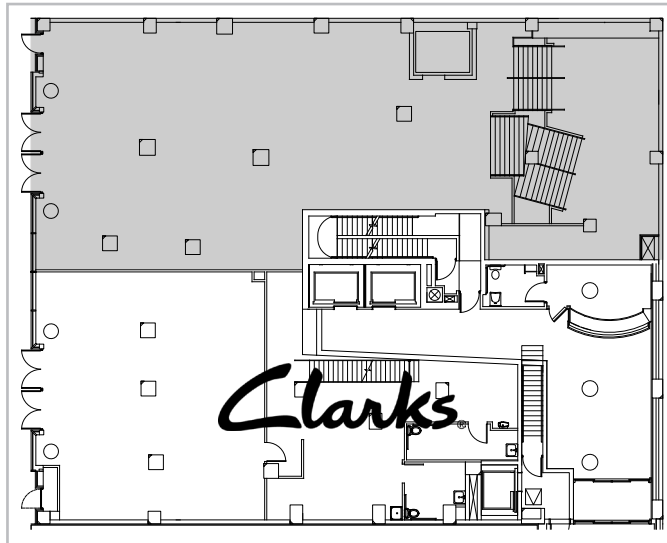
www.sandordev.com

sandor

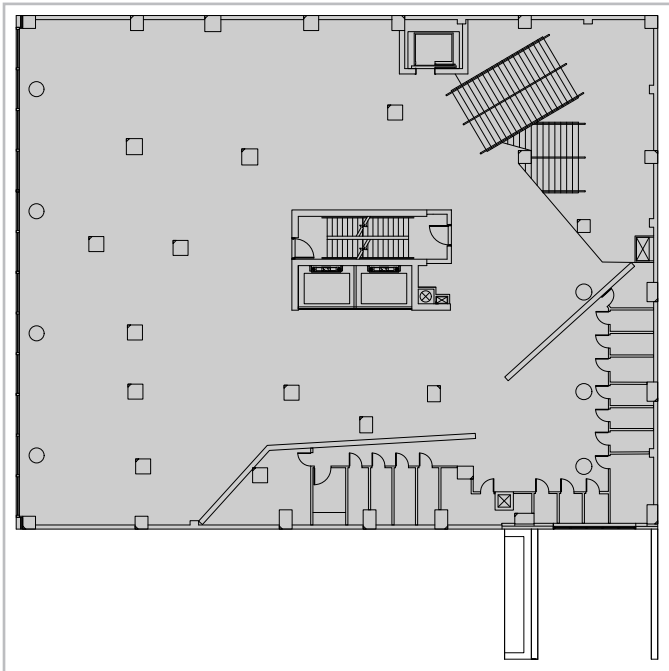
999 Third Avenue

999 Third Ave.
New York, NY 10022
Manhattan Borough, New York County

street level



second floor



cellar

